



# Assumption University

---

FROELICH SCHOOL  
OF NURSING

## **Report to Communities of Interest**

---

Assumption University  
Froelich School of Nursing  
November 13, 2025

Assumption University welcomed its first class of nursing students in 2018 after significant planning of undergraduate prelicensure programming by founding dean Dr. Caitlin Stover. Since that time, the BSN program has grown in class size and also opened an Accelerated BSN program option, graduating its first class in August 2025. Since its inception, the program has boasted excellent outcomes, attracted accomplished faculty and become a destination school for many aspiring students passionate about becoming a nurse.

Assumption's nursing program is grounded in principles of Catholic values and as such provides students with a general education curriculum, known as The Foundations Program, cultivating well rounded students who begin the nursing coursework in the Spring of their sophomore year.

In 2023, the school was formally named the Froelich School of Nursing (FSn) after Chris Froelich, a friend, benefactor and Assumption alumnus.

This report is intended to provide our community partners with an overview of the FSn's vision and strategies leading to today and our future. We are pleased for your commitment to our students and for providing us with valuable feedback that will help the school thrive.

## Mission

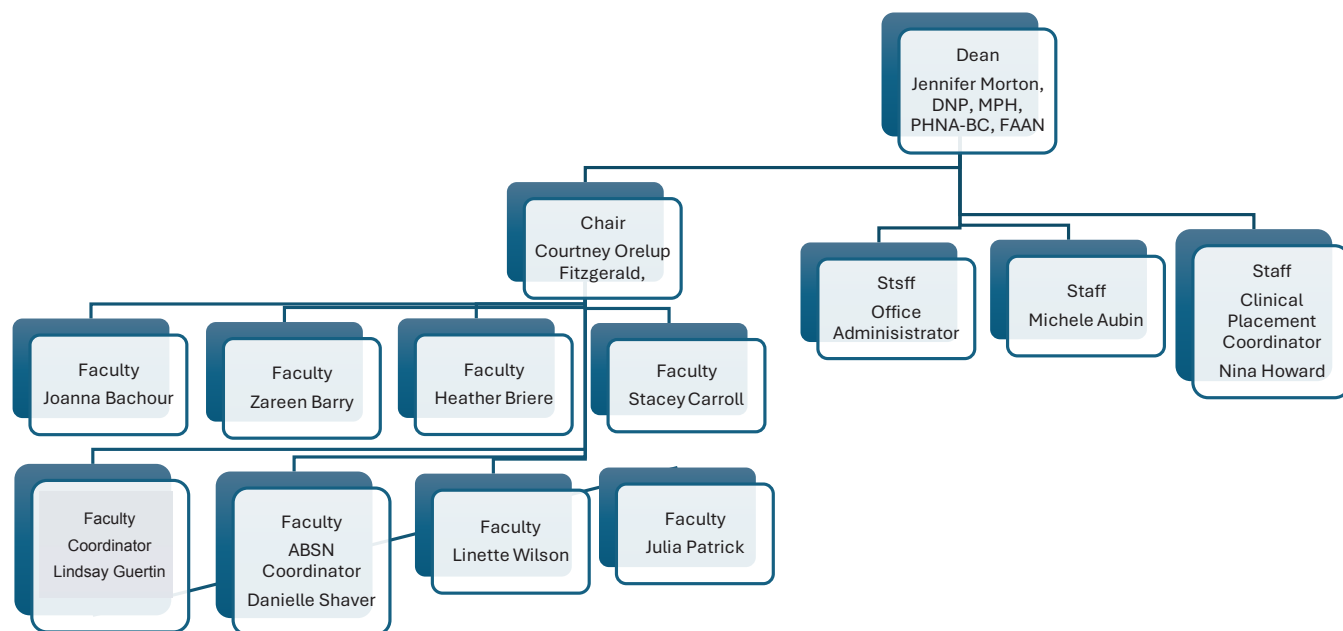
The mission of the Froelich School of Nursing is to cultivate an intellectual community committed to preparing leaders in the delivery of safe, high-quality, and compassionate, professional nursing practice. Graduates are prepared, in accordance with the principles of Catholic healthcare ethics, to care for, serve, and promote the health of society.

**The “knowledge needs base” of what nurses need to know, doubles every 5-7 years**  
(NACNEP, 2018)

## Student Learning Outcomes

- Synthesize concepts and theories from the liberal arts and science education rooted in the Catholic intellectual tradition and Catholic health care ethics to guide professional nursing practice. (AACN Essentials I, IV, V, VI, VIII, IX)
- Integrate concepts of safety and quality improvement in the practice of professional nursing within a healthcare system (AACN Essentials II, III, VIII, IX)
- Appraise evidence to support clinical decisions throughout the nursing process. (AACN Essentials II, III, IX)
- Incorporate information systems and healthcare technologies throughout the nursing process. (AACN Essentials IV, IX)
- Examine the impact of socio-economic, cultural, spiritual, legal, ethical, and political factors influencing healthcare and professional nursing practice. (AACN Essentials V, VI, VII, VIII, IX)
- Collaborate with patients, families, populations, and the interprofessional healthcare team by selecting appropriate communication strategies. (AACN Essentials VI, VII, VIII, IX)
- Select evidence-based health promotion and health maintenance strategies to maximize health and minimize risk to patients, families, and populations. (AACN Essentials II, III, VII, VIII, IX)
- Examine a variety of health determinants when planning, implementing, and evaluating nursing care of patients, families, and populations. (AACN Essentials V, VII, IX)
- Demonstrate characteristics and behaviors consistent with the professional standards of moral, ethical, and legal practice in professional nursing. (AACN Essentials I, IX)

## Organizational Chart for Froelich School of Nursing



### Dean

- Jennifer Morton, DNP, MPH, PHNA-BC, FAAN

### Faculty

- Courtney Orelup-Fitzgerald, PhD, RN, CNE, CPN, Chair
- Danielle Shaver, PhD, RN, CNE, IBCLC-R, ABSN Coordinator
- Lindsay Guertin, MSN/Ed, RN, CNE, CNEcl, CHSE, Coordinator
- Zareen Barry, PhD, RN, MPH, FNP-BC
- Joanna Bachour, MSN, RN
- Julia Patrick, PhD, RN
- Heather Briere, PhD, FNP-BC, CCM, CNE
- Linette Wilson, PhD(c), RN
- Stacey Carroll, PhD, RN, ANP-BC

### Adjunct Faculty

FSon employs a minimum of 12 adjunct faculty each semester who serve as clinical instructors and skills lab support.

### Staff

- Michelle Aubin, Professional Practice Coordinator
- Nina Howard, RN, Clinical Placement Coordinator

## Curriculum

### Bachelor of Science in Nursing (BSN)

Foundations Program (known in other institutions as general/core education)

The Foundations Program at Assumption University occurs in the first two years of study. It provides students with a Catholic liberal arts foundation that prepares students for thoughtful and meaningful engagement with their chosen major.

The Foundations Program engages students with multiple modes of inquiry while boldly seeking the true, the good, and the beautiful wherever they can be found. The Foundations Program furthers Assumption's mission of forming graduates known for intellectual seriousness, thoughtful citizenship, and devotion to the common good.

FIRST YEAR			
SEMESTER 1		SEMESTER 2	
Course	CR	Course	CR
BIO 150 Introductory Biology	4	Pillar Mathematics OR Pillar History	3
Cornerstone English Composition *** OR Cornerstone Introduction to Literature ***	3	Cornerstone Introduction to Literature *** OR Cornerstone English Composition ***	3
Cornerstone Introduction to Theology** OR Cornerstone Socrates and the Search for Truth **	3	Cornerstone Theology OR Cornerstone PHI 151 Ethics and the Good Life	3
HSC 100 Systems Approach to Delivering Healthcare in America OR *Pillar Human Development & Disability	3	BIO 240 Anatomy with lab	4
Pillar Foreign Language	3	BIO 250 Microbiology with lab	4
CHE 102 Chemistry for Health Sciences	1		
TOTAL: 17 Credit Hours		TOTAL: 17 Credit Hours	
SECOND YEAR			
SEMESTER 3		SEMESTER 4	
Course	CR	Course	CR
HSC 100 Systems Approach to Delivering Healthcare in America OR *Pillar Human Development & Disability	3	NUR 204 Pathopharmacological Process	3
BIO 370 Physiology with lab	4	NUR 100 Introduction to Professional Nursing	3
Cornerstone Introduction to Theology** OR Cornerstone Socrates and the Search for Truth **	3	Cornerstone PHI 151 Ethics and the Good Life OR Cornerstone Theology	3
Pillar History OR Pillar Mathematics	3	PSY224 Statistics	3
Elective OR Forum Course	3	Forum Course OR Elective	3
TOTAL: 16 Credit Hours		TOTAL: 15 Credit Hours	
THIRD YEAR			
SEMESTER 5		SEMESTER 6	
Course	CR	Course	CR
NUR 200 Fundamentals of Professional Nursing	4	NUR 300 Professional Nursing	3
NUR 201 Fundamentals of Prof Nursing Clinical	3	NUR 301 Professional Nursing Clinical	3
NUR 304 Pathopharmacological Therapeutics	3	NUR 310 Evidence Based Nursing Practice	2
NUR 210 Professional Nursing Concepts	3	NUR 312 Promoting Mental Health	3
BIO 110 Nutrition	3	NUR 313 Promoting Mental Health Clinical	1
		Elective	3
TOTAL: 16 Credit Hours		TOTAL: 15 Credit Hours	
FOURTH YEAR			
SEMESTER 7		SEMESTER 8	
Course	CR	Course	CR
NUR 400 Complexities of Professional Nursing	3	NUR 410 Clinical Judgement Seminar	2
NUR 401 Complexities of Prof Nursing Clinical	2	NUR 412 Promoting Global Health	3
NUR 420 Promoting Family Health	4	NUR 413 Promoting Global Health Clinical	2
NUR 421 Promoting Family Health Clinical	3	NUR 490 Transition to Professional Nursing Practice	3
Elective OR Pillar Fine Art or Music	3	NUR 491 Transition to Professional Nursing Practice Clinical	3
		Pillar Fine Art or Music OR Elective	3
TOTAL: 15 Credit Hours		TOTAL: 16 Credit Hours	

## Accelerated Bachelor of Science in Nursing (ABSN, formerly known as PBAT)

### Summer Entry Point

Course	Credits
Summer I	
NUR 114 A Basics of Professional Nursing	1
NUR 200 A Fundamentals of Professional Nursing	4
NUR 201 A Fundamentals of Professional Nursing Clinical	3
NUR 204 A Pathopharmacological Processes	3
NUR 210 A Professional Nursing Concepts	3
NUR 214 A Clinical Judgement Seminar I	2
Fall	
NUR 300 A Professional Nursing	3
NUR 301 A Professional Nursing Clinical	3
NUR 304 A Pathopharmacological Therapeutics	3
NUR 310 A Evidence Based Nursing Practice	2
NUR 312 A Professional Nursing: Promoting Mental Health	3
NUR 313 A Professional Nursing: Promoting Mental Health Clinical	1
Spring	
NUR 400 A Complexities of Professional Nursing	3
NUR 401 A Complexities of Professional Nursing Clinical	2
NUR 420 A Professional Nursing: Promoting Family Health Clinical	4
NUR 421 A Professional Nursing: Promoting Family Health	3
Summer II	
NUR 414 A Clinical Judgement Seminar II	3
NUR 412 A Professional Nursing: Promoting Global Health	3
NUR 413 A Professional Nursing: Promoting Global Health Clinical	2
NUR 490 Transition to Professional Nursing Practice	2
NUR 491 Transition to Professional Nursing Practice Clinical	3
Total Credits Earned	56 credits

### Testing Vendor and Tools to Support Student Learning

ATI (Assessment Technologies Institute, LCC) Integrated throughout nursing curriculum to provide individual student data for risk assessment as well as aggregated data for program evaluation.

Unbound-utilized in experiential settings for medication review and clinical judgment case studies.

### Experiential Learning

Clinical Learning Suite

- Simulation (currently Simulation at 25% of total experiential hours)
- Skills Lab
- Exploring Virtual Reality

Clinical-In 2024-2025-over 46 agencies provide services for Assumption FSoN students

Community based Clinical Associated with Global Health Course

### Interprofessional Education and Collaborative Practice

FSoN values IPE and integrates it into the curriculum in various ways. We work with our PA program to provide opportunities for students to learn with, from and about one another's chosen professions in simulation and other activities.

## Outcomes

Attrition prior to program completion generally occurs during the first two years of the curriculum. The FSoN is working to address persistence rates.

## NCLEX-RN Pass Rates

PROGRAM	2023	2024	2025
BSN	100% (19)	96% (23)	100% (17)
ABSN	NA	NA	100% (4)

## Job Placement and Student Satisfaction

GRADUATING CLASS	Employed as RN's within 12 months	Setting	Where
2023	16/16 (19)	mostly inpatient	more than 50% Worcester County
2024	10/10 (17)	mostly inpatient	more than 50% Worcester County

In both graduating classes, of those who reported, 100% either strongly agreed or agreed they were satisfied with their FSoN education at Assumption University.

## Strategic Planning

The school of nursing has developed a strategic plan that is aligned with the university strategic plan, "Thrive". University Strategic Plan can be found [here](#).

## External Partnerships & Philanthropy

- Girl's Inc. Summer Camp, Scholarships (Bob and Kate Hunter)
- Saint Benedict's School Collaboration (in development - Chris Froelich)
- Exploring avenues of extramural funding

## Student Nurses Association-Faculty Advisor, Dr. Patrick

- Massachusetts General Hospital Blood Drive on campus-planned for 11/19/25. SNA has led planning and advertisements for this event
- DCF event participation: most recently, 9 students volunteered at the fall festival at the Worcester DCF office
- Worcester public schools winter clothing drive happening in November and December 2025
- Food drive for those impacted by SNAP benefits cuts-in process

## Reporting

- MBORN Annual Report-submitted Fall 2025
- AACN Faculty Vacancy Survey-Submitted Fall 2025
- Continuous Improvement Progress Report CCNE due in June 2026 (initial accreditation 2023)

## New Programming

- MSN (in development)-coming in 2027
  - Nursing Leadership (MSN)
  - MSN/MBA Dual Degrees with Grenon School of Business





*2025 annual Blessing of the Hands ceremony*